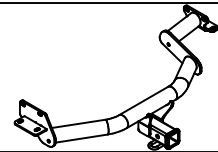




Class III Receiver Hitch Part No. 69641C



Fits: **HYUNDAI PALISADE**



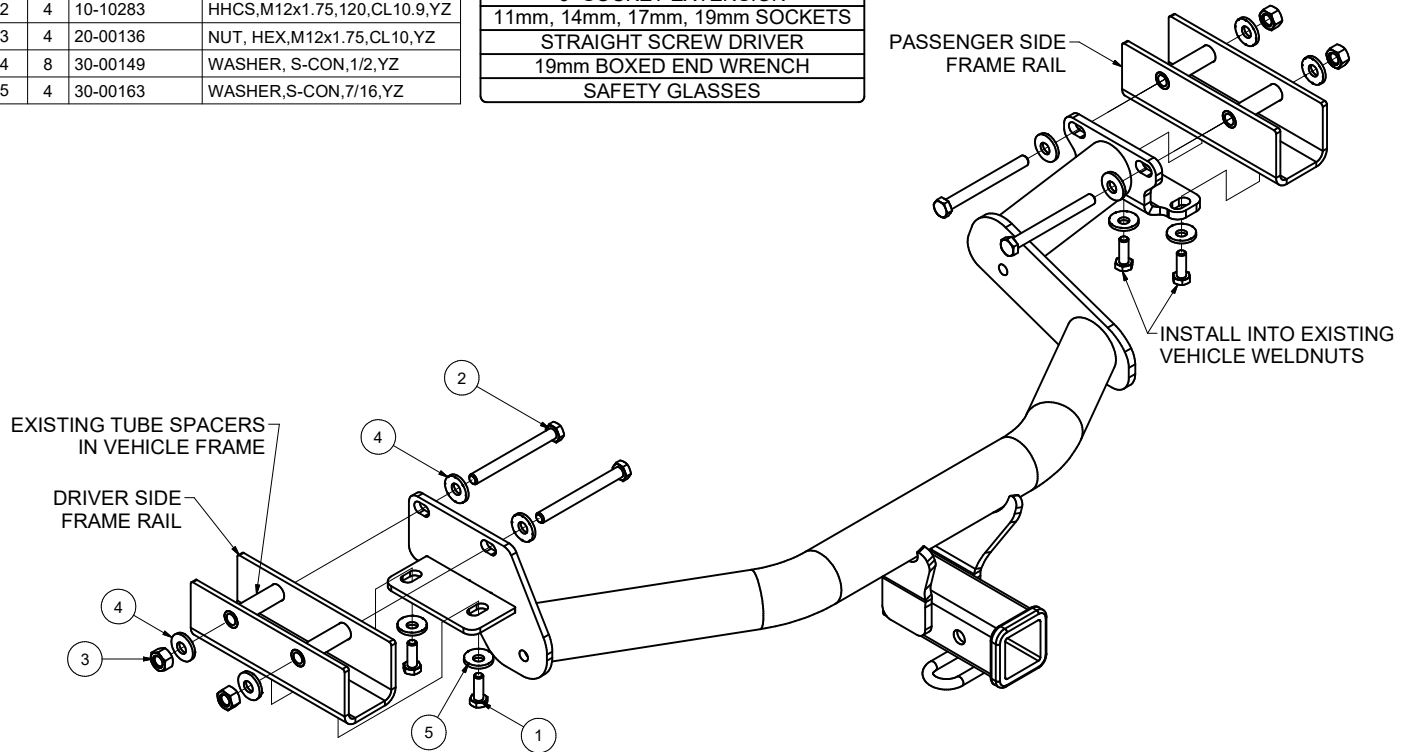
GROSS LOAD CAPACITY WHEN USED AS A WEIGHT CARRYING HITCH: 5,000 LBS. TRAILER WEIGHT & 750 LBS. TONGUE WEIGHT.
GROSS LOAD CAPACITY WHEN USED AS A WEIGHT DISTRIBUTION HITCH: 6,000 LBS. TRAILER WEIGHT & 750 LBS. TONGUE WEIGHT.



WARNING: * DO NOT EXCEED VEHICLE MANUFACTURER'S RECOMMENDED TOWING CAPACITY. *****

Parts List			
ITEM	QTY	PART NUMBER	DESCRIPTION
1	4	10-10271	HHCS,M10x1.25,30,CL10.9,YZ
2	4	10-10283	HHCS,M12x1.75,120,CL10.9,YZ
3	4	20-00136	NUT, HEX,M12x1.75,CL10,YZ
4	8	30-00149	WASHER, S-CON,1/2,YZ
5	4	30-00163	WASHER,S-CON,7/16,YZ

TOOLS REQUIRED	
RATCHET	
TORQUE WRENCH	
6" SOCKET EXTENSION	
11mm, 14mm, 17mm, 19mm SOCKETS	
STRAIGHT SCREW DRIVER	
19mm BOXED END WRENCH	
SAFETY GLASSES	



HITCH WEIGHT: 39 LBS.

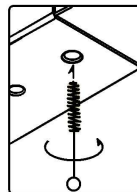
INSTALL TIME

PROFESSIONAL: 45 MINUTES

NOVICE (DIY): 90 MINUTES

INSTALL NOTES:

- NO DRILLING REQUIRED
- LOWER EXHAUST
- TEMPORARILY REMOVE UNDERBODY PANEL



WELD NUT CLEANING

To remove debris from weldnuts in frame, spray lubricant or compressed air into hole. For heavy debris, use a small wire brush. (Be careful not to damage threads).

FRONT
REAR

INSTALLATION STEPS

1. Lower spare tire with 11mm socket and ratchet. Place spare off to the side.
2. Remove the driver side underbody panel by removing (3) push clips and turning (2) plastic retainers counterclockwise with a 14mm socket.
3. Unhook the (4) rearward most exhaust isolators to lower the exhaust. NOTE: be sure to support exhaust.
4. Raise hitch into position over exhaust and loosely install fasteners as shown above.
5. Torque all 12mm fasteners to 79 lb-ft and all 10mm fasteners to 48 lb-ft.
6. Reinstall underbody panel, raise spare tire back into position and reinstall the exhaust isolators.

PERIODICALLY CHECK THIS RECEIVER HITCH TO ENSURE THAT ALL FASTENERS ARE TIGHT AND THAT ALL STRUCTURAL COMPONENTS ARE SOUND.

Keystone Automotive Operations Inc., warrants this product to be free of defects in material and/or workmanship at the time of retail purchase by the original purchaser. If the product is found to be defective, Keystone Automotive Operations Inc., may repair or replace the product, at their option, when the product is returned, prepaid, with proof of purchase. Alteration to, misuse of, or improper installation of this product voids the warranty. Keystone Automotive Operations Inc.'s liability is limited to repair or replacement of products found to be defective, and specifically excludes liability for incidental or consequential loss or damage. This product complies with safety specifications and requirements for connecting devices and towing systems of the state of New York, V.E.S.C. Regulation V-5 and SAE J684. For Technical & Warranty Support : 1-877-544-4449 Fax- 1-855-242-8922 www.huskytow.com

07/06/2020